



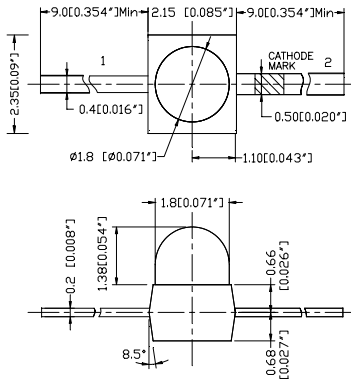
## ① MINI TYPE LED LAMPS

Rev: A      Date: 2001/11/01

ETG-2AX Series Electro-Optical Characteristics:									
Part Numbers	Lighting Color	Material	V <sub>F</sub> (V)		λ (nm)			Chip I <sub>v</sub> (mcd)	Internal Circuit
			Typ	Max	λ <sub>D</sub>	λ <sub>P</sub>	Δλ	Typ	
ETG-2AX660-20	Red	GaAlAs	1.80	2.30	643	660	25	19	
ETG-2AX640-20	Red	AlGaInP	1.90	2.40	631	640	23	52	
ETG-2AX630-20	Hyper Red	AlGaInP	1.90	2.40	624	635	25	67	
ETG-2AX620-20	Orange	AlGaInP	1.90	2.40	615	620	18	75	
ETG-2AX610-20	Amber	AlGaInP	1.90	2.40	605	610	25	52	
ETG-2AX600-20	Amber	AlGaInP	1.90	2.40	595	600	20	75	
ETG-2AX590-20	Yellow	AlGaInP	2.00	2.50	590	592	32	57	
ETG-2AX575-20	Green	AlGaInP	2.10	2.60	578	575	18	37	
ETG-2AX525-20	Green	GaN/SiC	3.20	3.80	527	525	40	120	
ETG-2AX505-20	Green	GaN/SiC	3.30	4.00	509	505	37	120	
ETG-2AX470-20	Blue	GaN/SiC	3.40	4.00	465	470	68	55	
ETG-2AX430-20	Blue	GaN/SiC	4.00	4.50	465	460	65	45	



## ① Package Outline Drawing:

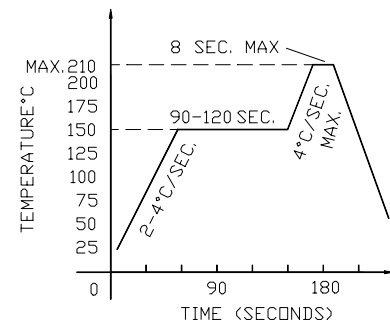


- NOTES:**
1. All dimensions are in millimeters (inches);
  2. Tolerances are ±0.2mm (0.008inch) unless otherwise noted;
  3. Resin color: water clear.

### \* Soldering iron

Basic spec is ≤ 5sec when 260°C. If temperature is higher, time should be shorter (+10°C → -1sec). Power dissipation of iron should be smaller than 15W, and temperatures should be controllable. Surface temperature of the device should be under 230°C.

### \* Recommended Reflow Soldering Profile.



## ① Absolute Maximum Ratings:

Series	I <sub>F</sub> (mA)	*I <sub>FP</sub> (mA)	V <sub>R</sub> (V)	T <sub>OP</sub> (°C)	T <sub>ST</sub> (°C)
ETG-2AX Series	30	120	5	-20~+80	-20~+100



**ETG Inc.**  
8599 Venice Blvd. Unit K,  
Phone: + 1 (310) 202-6400  
<http://www.etgtech.com/>

Los Angeles, Ca 90034, U. S. A.  
Fax: +1 (310) 202-6400  
Email: [info@etgtech.com](mailto:info@etgtech.com)

## \* Optical Characteristic Curves Of ETG-2AX Series

Rev: A    Date: 2001/11/01

